



Tips tricks

Install detachable wall shelves invisibly



Would you like to mount wall shelves completely invisibly, but still have the option of simple disassembly? Invis Mx2 is ideal for this

How it works:



1. Drill precisely into the mounting strip thanks to the Rasto drill jig



2. Fasten the stud with the insertion jig



3. Add the drill holes to the shelf with the help of the drill jig



4. Screw the Invis Mx2 connector flush into the shelf



5. Align the mounting strip and fasten it to the wall



6. Align the shelf directly to the mounting strip

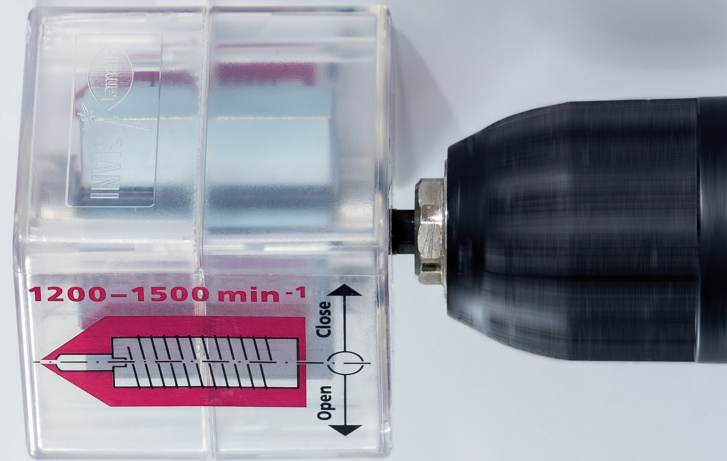


7. Join the components with the Minimag and a speed of 1200-1500 rpm min⁻¹

Invis Mx2

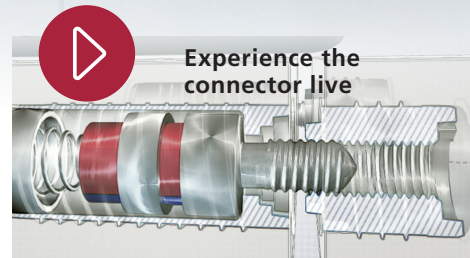


Magnet-driven connection with an even higher clamping force!



Advantages:

- Powerfully joined workpieces
- 250 kg clamping force per connector
- Detachable in seconds
- Completely invisible



Invis Mx2 and accessories



6100300



6100301



6012300 20 pieces



6012301 20 pieces



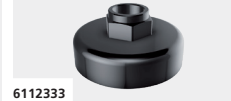
6012317 20 pieces



6012309 20 pieces



6012208 10 pieces



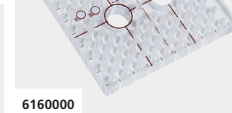
6012312 20 pieces



6112330



6112205



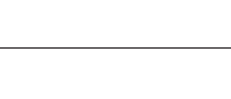
6100204



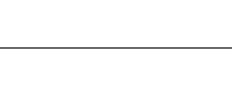
6112333



6112060



6100061



6112331



6160000



6160000



6100058



6560450



6160001



6160601



Manufacturer:
Lamello AG
Joining technology
 Hauptstrasse 149
 CH-4416 Bubendorf
 Tel. +41 61 935 36 36
 Fax +41 61 935 36 06
 info@lamello.com
 www.lamello.com